



www.flitetest.com

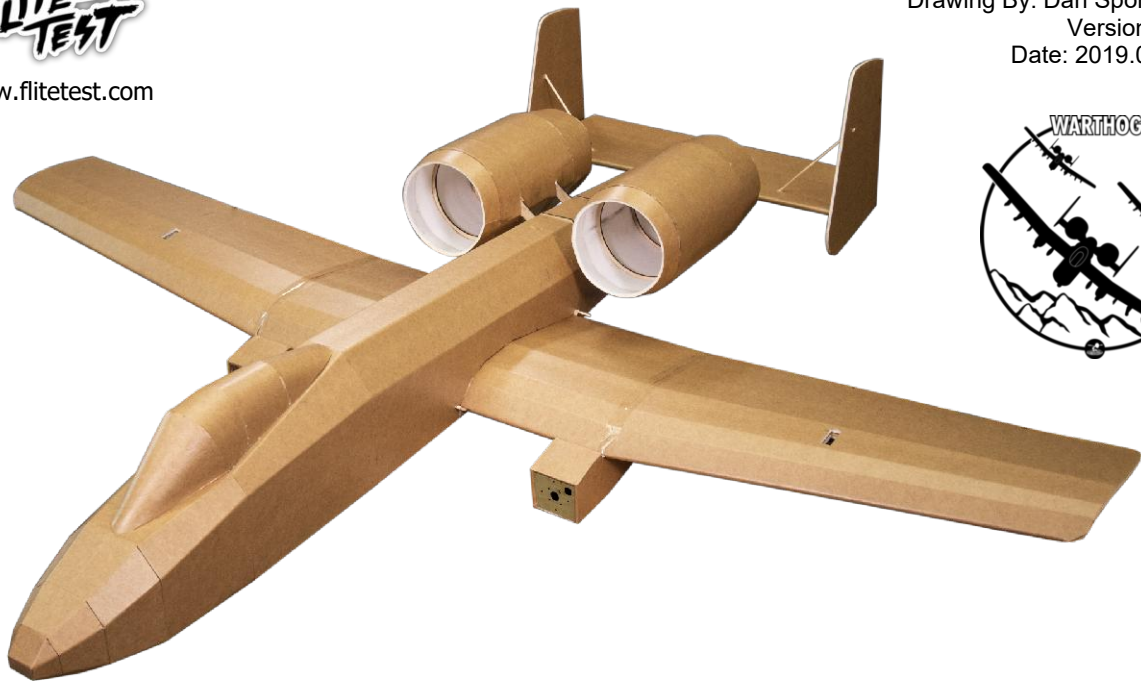
FT A-10 Warthog

Designed By: Josh Bixler & Andres Lu

Drawing By: Dan Sponholz

Version: 1.0

Date: 2019.01.30

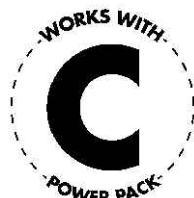


GENERAL SPECIFICATIONS:

LENGTH:	56.12 in		1425 mm
CG:	2.50 in		63.5 mm
WINGSPAN:	60.50 in		1537 mm
WING AREA:	582.9 in ²		37.6 dm ²
DRY WEIGHT:	38.0 oz.		1075 g
ALL UP WEIGHT:	50.4 oz.		1430 g
WING LOADING:	12.5 oz/ft ²		38 g/dm ²
WCL:	6.5		
THROWS:	16°		
EXPO:	30%		
CHANNELS:	4 [THR x 2 AIL ELE]		

RECOMMENDED ELECTRONICS:

MOTORS:	2 x 2218B 1080 kv
PROPELLER:	2 x 10 x 4.5
ESC:	2 x 35A
SERVOS:	3 x 9 g
BATTERY:	2200-3300 mAh 3S-4S



BUILD SKILL LEVEL:

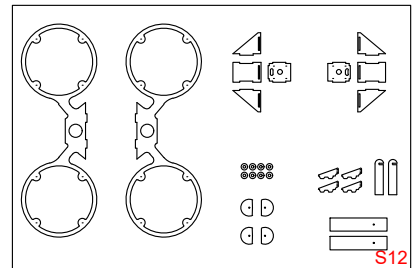
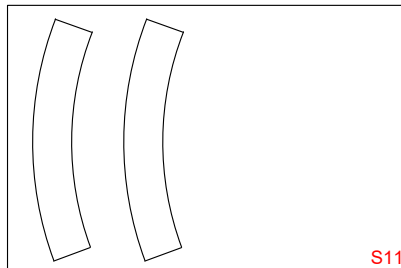
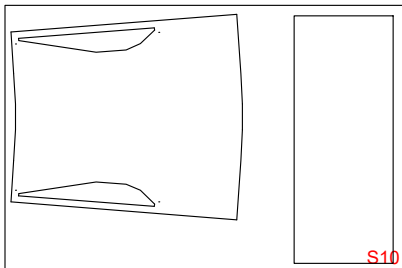
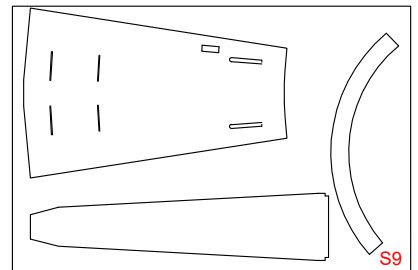
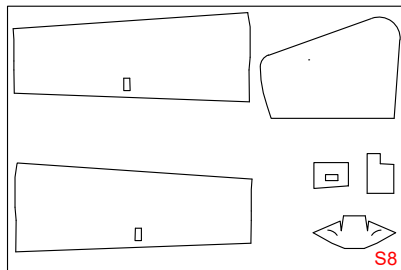
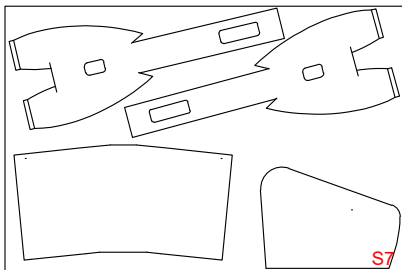
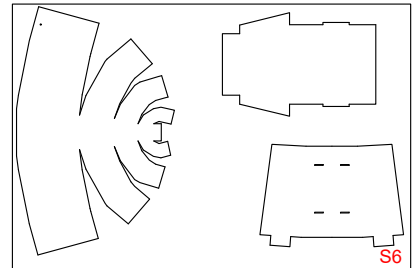
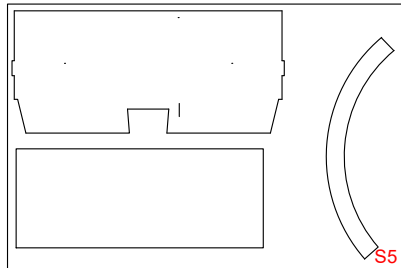
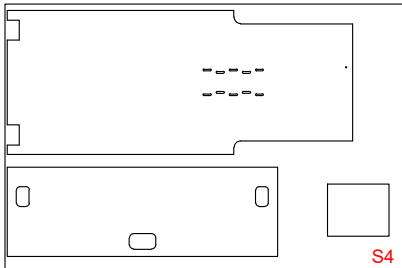
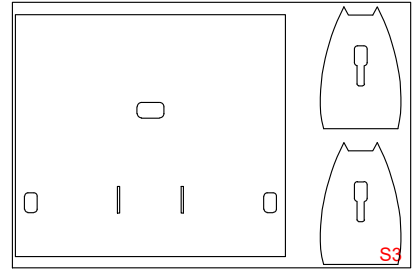
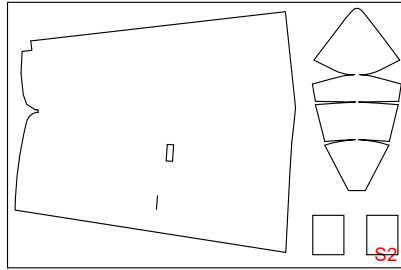
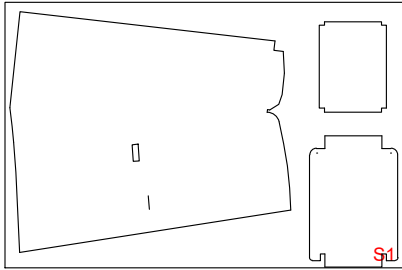


PILOT SKILL LEVEL:



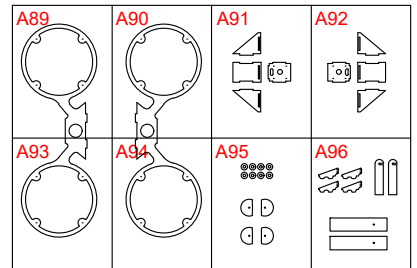
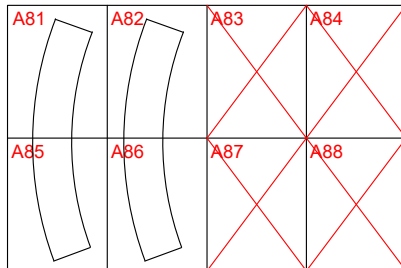
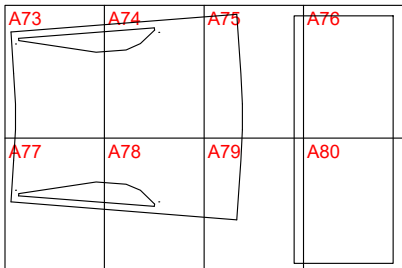
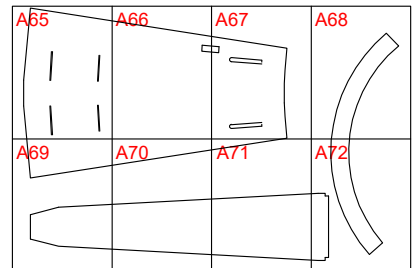
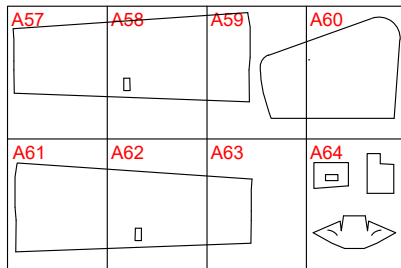
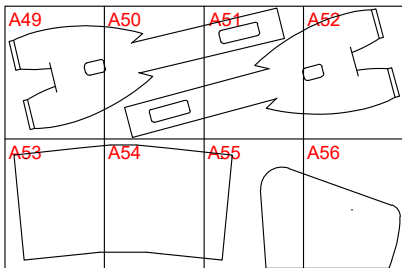
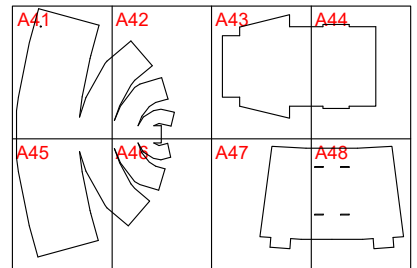
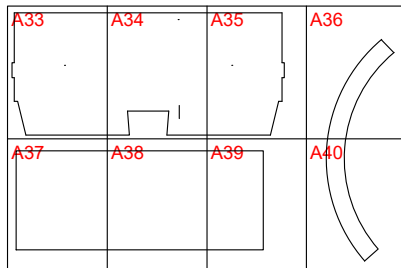
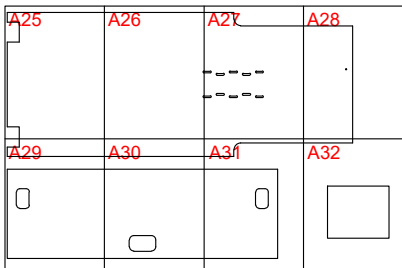
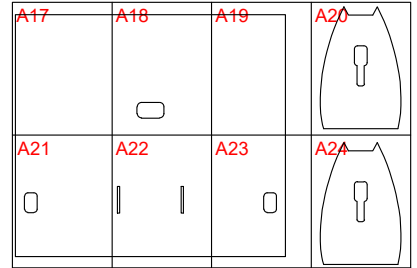
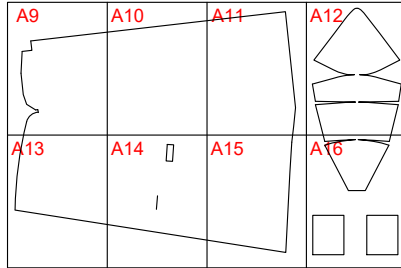
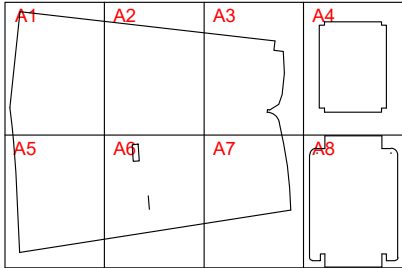


FT A-10 Warthog: Full-Size Key



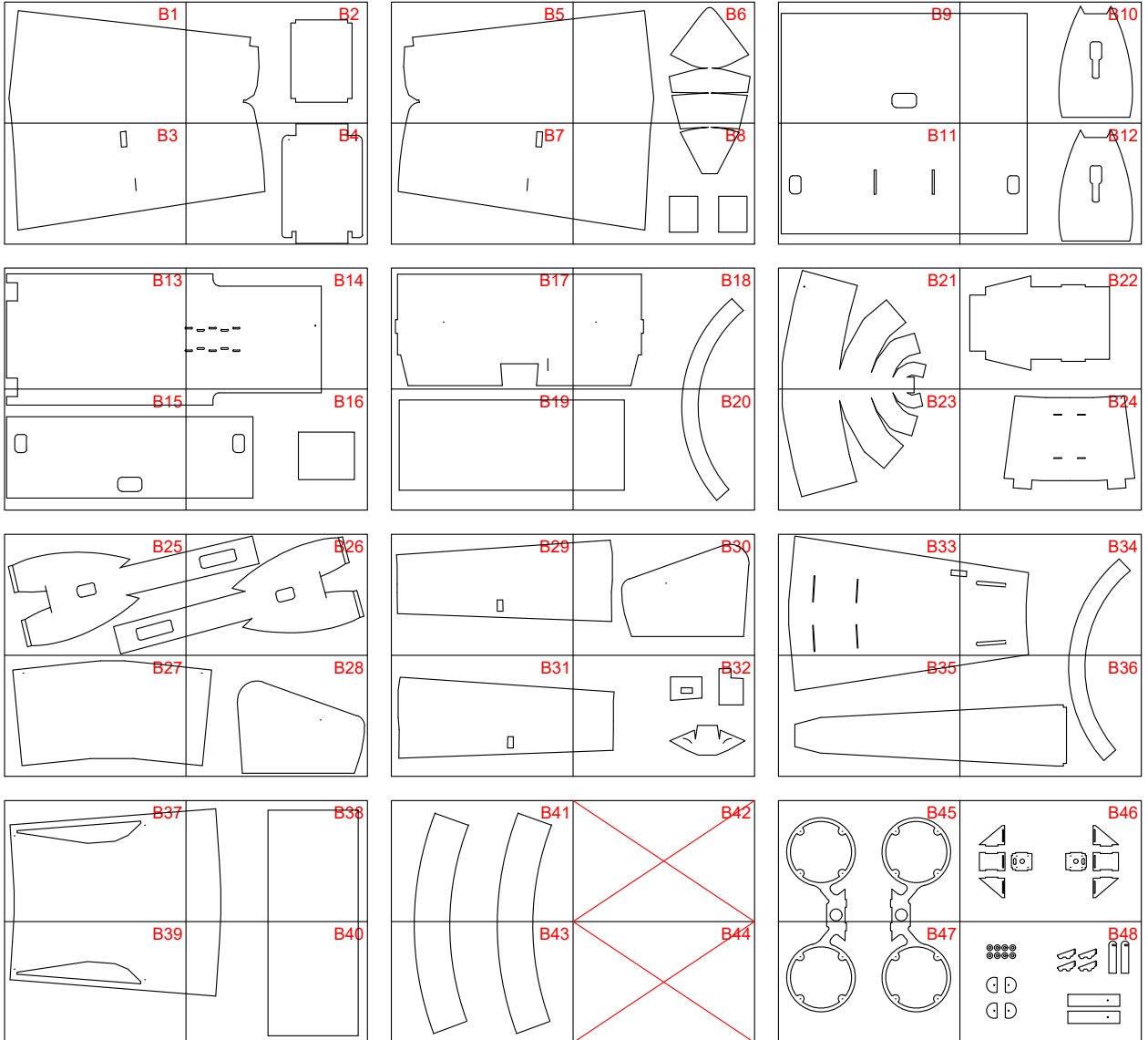


FT A-10 Warthog: Tile A Key





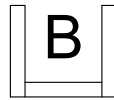
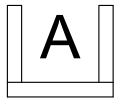
FT A-10 Warthog: Tile B Key



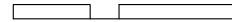
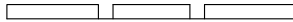
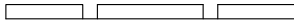
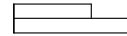


Drawing Key

FOLD TYPES



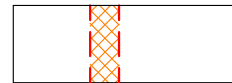
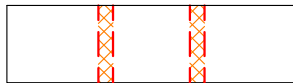
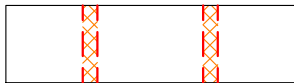
C



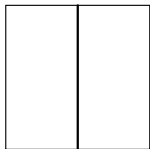
A - FOLD (ABOVE)

B - FOLD (BESIDE)

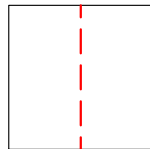
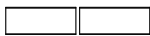
C - FOLD (COVER)



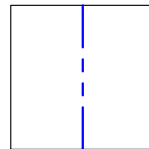
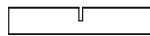
LINE TYPE/COLOR



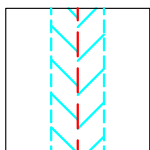
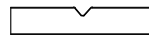
CUT



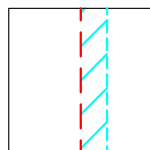
50% SCORE



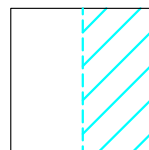
CREASE



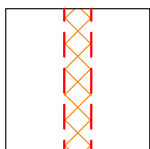
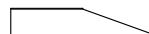
45° DOUBLE
BEVEL



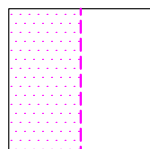
45° SINGLE
BEVEL



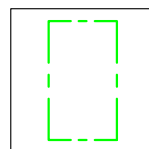
EDGE
BEVEL



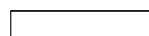
CAVITY



REMOVE
PAPER



REFERENCE/
OPTIONAL



SYMBOLS

